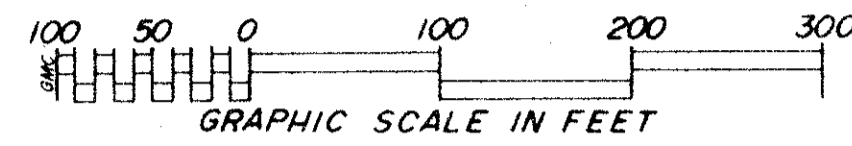


# WESTWOODS

A PLANNED UNIT DEVELOPMENT

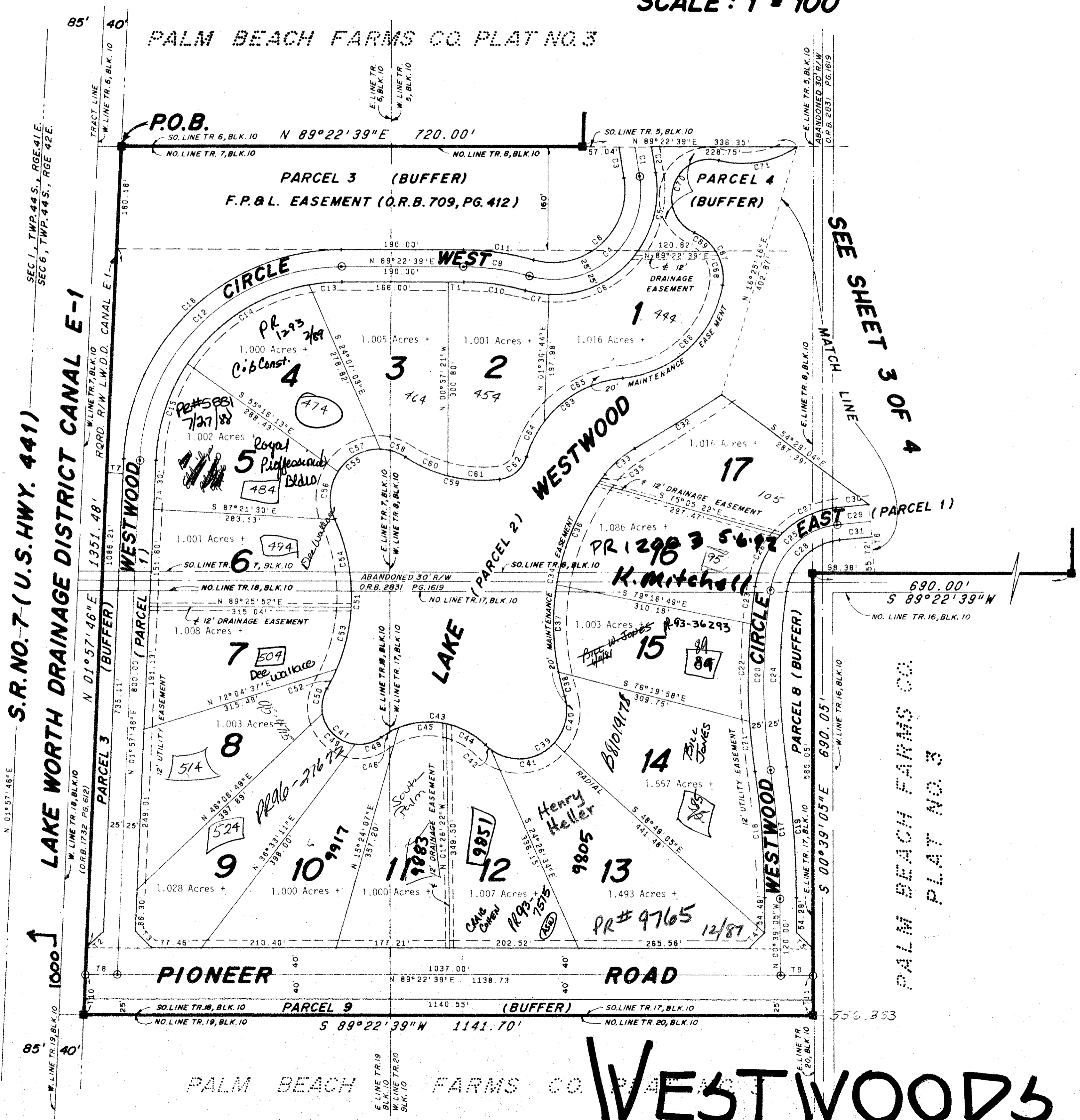
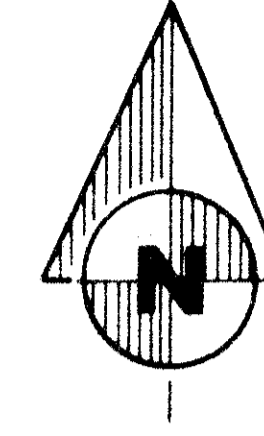
A REPLAT OF TRACTS 4,7,8,9,17,18 AND PART OF TRACT 5, BLOCK 10, TRACT 23 AND PART OF TRACTS 20,21 AND 22, BLOCK 8, PALM BEACH FARMS COMPANY PLAT NO.3, PLAT BOOK 2, PAGE 46, PUBLIC RECORDS OF PALM BEACH COUNTY, FLORIDA.

SHEET 4 OF 4 SHEETS



SCALE: 1" = 100'

APRIL 1978



( CURVE TABLE - "C" NO.s )

NO.	CH. BRNG.	CHORD	RADIUS	DELTA	ARC	TANGENT
1	S 09°44'08"E	45.22'	2161.37'	01°11'55"	45.22'	22.61'
2	S 09°47'09"E	40.95'	2136.37'	01°05'54"	40.95'	20.48'
3	S 09°41'12"E	49.48'	2186.37'	01°17'48"	49.48'	24.74'
4	N 47°31'17"E	232.00'	137.00'	115°42'45"	276.68'	218.03'
5	N 11°52'32"E	122.48'	162.00'	44°25'18"	125.60'	66.15'
6	N 62°50'57"E	155.90'	162.00'	57°31'33"	162.65'	88.92'
7	S 81°30'19"E	38.83'	162.00'	13°45'55"	38.92'	19.55'
8	N 47°31'17"E	189.66'	112.00'	115°42'45"	226.19'	178.24'
9	S 82°37'21"E	103.82'	373.00'	16°00'00"	104.16'	52.42'
10	S 82°37'21"E	96.86'	348.00'	16°00'00"	97.18'	48.91'
11	S 82°37'21"E	110.78'	398.00'	16°00'00"	111.14'	55.94'
12	N 45°40'12"E	435.49'	315.13'	87°24'53"	480.78'	301.22'
13	N 84°27'59"E	49.68'	290.13'	09°49'20"	49.74'	24.93'
14	N 56°37'01"E	226.15'	290.13'	45°52'35"	232.30'	122.78'
15	N 17°48'15"E	158.56'	290.13'	31°42'57"	160.60'	82.42'
16	N 45°40'12"E	470.04'	340.13'	87°24'53"	518.93'	325.12'
17	N 04°53'58"W	200.00'	1350.00'	08°29'46"	200.18'	100.28'
18	N 04°53'58"W	198.30'	1325.00'	08°29'46"	198.48'	98.42'
19	N 04°53'58"W	203.70'	1375.00'	08°29'46"	203.89'	102.13'
20	N 00°32'43"W	280.00'	938.00'	17°12'18"	281.05'	141.59'
21	N 06°47'05"W	79.23'	961.00'	04°43'31"	79.26'	39.65'
22	N 00°05'51"E	151.45'	961.00'	09°02'21"	151.61'	75.96'
23	N 06°20'13"E	57.69'	961.00'	03°26'24"	57.70'	28.86'
24	N 00°32'43"W	272.52'	911.00'	17°12'15"	273.54'	137.81'
25	N 45°32'08"E	148.00'	120.00'	74°56'17"	156.95'	81.98'
26	N 26°18'08"E	90.75'	145.00'	36°28'18"	92.30'	47.77'
27	N 63°46'17"E	95.53'	145.00'	38°27'59"	97.35'	50.59'
28	N 45°32'08"E	115.58'	95.00'	74°56'17"	124.25'	72.81'
29	N 83°54'41"E	51.91'	1640.00'	01°48'49"	51.91'	25.96'
30	N 83°54'41"E	52.70'	1665.00'	01°48'49"	52.70'	26.35'
31	N 83°54'41"E	51.12'	1615.00'	01°48'49"	51.12'	25.56'
32	N 88°00'58"E	160.00'	243.00'	04°18'44"	160.04'	80.06'
33	N 48°55'33"E	61.15'	157.00'	22°27'35"	61.54'	31.17'
34	N 09°48'41"E	350.58'	375.00'	55°44'09"	364.79'	198.28'
35	N 36°26'01"E	16.52'	375.00'	02°31'29"	16.52'	8.26'
36	N 22°04'13"E	170.00'	375.00'	26°12'07"	171.49'	87.27'
37	N 01°28'41"W	136.00'	375.00'	20°53'42"	136.78'	69.15'
38	N 49°58'33"W	40.00'	375.00'	08°05'52"	40.02'	20.09'
39	N 57°58'28"E	145.55'	75.00'	152°01'40"	199.00'	301.12'
40	N 1°34'16"E	74.12'	75.00'	59°13'19"	77.52'	42.62'
41	N 82°13'41"E	98.50'	75.00'	82°05'32"	107.46'	65.30'
42	S 51°22'08"E	14.00'	75.00'	10°42'49"	14.02'	7.03'
43	S 86°30'13"E	162.33'	125.00'	80°58'59"	176.68'	106.73'
44	S 82°08'28"E	69.31'	125.00'	32°11'24"	70.23'	36.07'
45	N 84°38'33"E	73.88'	125.00'	34°22'39"	75.00'	38.67'
46	N 80°12'45"E	31.37'	125.00'	14°24'58"	31.45'	15.81'
47	S 48°49'58"E	113.53'	58.00'	156°19'29"	158.25'	278.72'
48	N 74°30'59"E	42.54'	58.00'	28°01'24"	43.55'	22.86'
49	S 46°55'39"E	69.88'	58.00'	74°56'17"	75.00'	43.78'
50	N 09°43'24"E	38.92'	375.00'	39°12'15"	39.69'	20.66'
51	N 02°08'56"E	264.33'	289.00'	54°25'39"	274.53'	148.61'
52	N 25°49'45"E	35.29'	289.00'	07°00'04"	35.31'	17.68'
53	N 12°25'43"E	99.38'	289.00'	08°08'04"	99.88'	50.44'
54	N 11°17'06"W	138.00'	289.00'	11°35'15"	138.35'	71.05'
55	N 48°31'51"E	145.84'	76.00'	147°15'15"	193.33'	258.71'
56	N 04°05'18"E	7.12'	76.00'	58°22'09"	7.43'	42.45'
57	N 62°07'32"E	10.12'	76.00'	58°22'09"	10.43'	42.45'
58	N 73°05'53"E	10.00'	76.00'	47°36'01"	10.39'	20.73'
59	S 77°27'03"E	50.96'	72.00'	39°11'24"	51.99'	78.81'
60	S 67°05'47"E	72.19'	24.00'	18°52'42"	72.50'	36.57'
61	S 86°43'24"E	80.39'	24.00'	20°32'32"	80.83'	40.86'
62	N 49°54'31"E	54.51'	68.00'	68°38'38"	54.65'	32.51'
63	N 50°33'14"E	94.00'	175.00'	87°03'03"	94.71'	116.60'
64	N 28°55'44"E	101.00'	175.00'	20°06'02"	101.39'	31.02'
65	N 60°36'15"E	101.28'	175.00'	47°36'01"	101.69'	76.55'
66	N 46°30'37"E	20.13'	175.00'	75°28'18"	20.41'	13.35'
67	S 29°20'18"E	8.82'	75.00'	76°15'32"	9.82'	58.87'
68	S 12°56'51"E	5.56'	75.00'	43°28'25"	5.69'	29.80'
69	S 51°04'37"E	42.82'	75.00'	32°48'53"	42.91'	22.06'
70	N 18°08'18"E	117.65'	59.00'	17°22'39"	117.30'	76.72'
71	N 78°22'24"E	124.61'	59.00'	48°44'23"	128.45'	68.40'

( TANGENT TABLE - "T" NO.s )

NO.	BEARING	DIST.
1	N 89°22'39"E	24.00'
2	N 45°40'12"E	37.55'
3	S 44°19'48"E	38.62'
4	N 44°21'47"E	36.05'
5	S 45°38'13"E	36.39'
6	N 05°10'55"W	105.72'
7	S 88°02'14"E	25.95'
8	N 89°22'39"E	51.00'
9	N 89°22'39"E	50.73'
10	N 01°57'46"E	65.07'
11	N 00°39'05"W	65.00'

**SURVEYOR'S NOTES**

- DENOTES PERMANENT REFERENCE MONUMENTS (PRM'S)
- DENOTES PERMANENT CONTROL POINTS (PCP'S)
- BEARINGS ARE REFERENCED TO AN ASSUMED BEARING OF N. 01°57'46" E. ALONG THE EAST LINE OF SECTION 1, TOWNSHIP 44 SOUTH, RANGE 41 EAST
- BUILDING SETBACK LINES SHALL BE AS REQUIRED BY PALM BEACH COUNTY ZONING REGULATIONS
- THERE SHALL BE NO BUILDINGS OR ANY KIND OF CONSTRUCTION OR TREES OR SHRUBS PLACED ON DRAINAGE EASEMENTS
- ALL LOTS CONTAIN A MINIMUM OF 1.00 ACRE
- LOT LINES ARE NOT RADIAL UNLESS SHOWN OTHERWISE
- FOR LOT ACRES REFER TO INDIVIDUAL LOTS ON SHEETS 2, 3 AND 4.

47

0337-000  
1000-114  
34  
134

WESTWOODS